



Australian Hammer Supplies Hire
Unit 3/32 Williamson Road
Ingleburn
NSW 2565

CATERPILLAR 325F

Minor Service

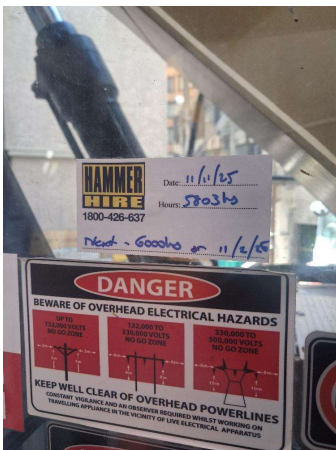
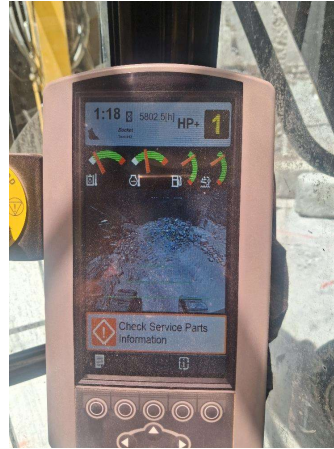
0 15 83 9

Inspection Number	RP054846	Customer No	200000
Serial Number	NDJ20530	Customer Name	AUSTRALIAN HAMMER SUPPLIES HIRE
Make	CATERPILLAR	Customer Email	
Model	CAT325FL	Works Order	RP054846
Equipment Family	22.6-26T HYDRAULIC EXCAVATOR	Completed On	11/11/2025 3:03:18 PM
Asset ID	AHSH63	Inspector	Jake Raffen
Location	AUSTRALIAN HAMMER SUPPLIES HIRE Unit 3/32 WILLIAMSON RD INGLEBURN 2565	PDF Generated On	11/11/2025
		Machine Hours	5802
		Next Meter	5689
Customer			

General Info & Comments

General Info/Comments

250hr service



TASK SAFETY INSTRUCTIONS

- | | |
|----------------------------------------------------------------------------------|--------|
| 1.1 Wear Correct PPE at all times | NORMAL |
| 1.2 All isolation and safe work procedures must be followed | NORMAL |
| 1.3 Identify task hazards and controls utilising hierarchy or controls model | NORMAL |
| 1.4 Ensure a competent operator and spotter is utilised to move mobile equipment | NORMAL |
| 1.5 Ensure all mobile equipment is fundamentally stable | NORMAL |
| 1.6 Ensure three points of contact is maintained during access and egress | NORMAL |
| 1.7 Ensure acceptable housekeeping standards are maintained at all times | NORMAL |

MACHINE GENERAL RUNNINGCHECKS

●	2.1 Check all work lights, beacon & reverse alarm for operation	PASS
●	2.2 Test all dash warning lights, gauges and audible alarms for correct operation	PASS
●	2.3 Check idle timer for correct shut down operation	N/A
●	2.4 Check operation of all three emergency stop buttons	PASS
●	2.5 Check operation of horn	PASS
●	2.6 Check operation of reverse camera	PASS
●	2.7 Check alternator charge voltage	PASS
●	2.8 Check operation of auto grease system by manually activating timer	N/A
●	2.9 Check fire system control panel for 'Normal'	N/A

PM FIRE SUPPRESSION SYSTEM

●	5.1 Ensure fire suppression bottle and components are securely mounted and in good condition	N/A
●	5.2 Ensure fire suppression is correctly charged	N/A
●	5.3 Inspect last charge date	DATE:2025-11-11T00:00:00.0000000
●	5.4 Check all fire extinguishers are securely mounted and in good condition	PASS
●	5.5 Check all fire extinguishers are correctly charged	PASS
●	5.6 Inspect last charge date	DATE:2025-11-11T00:00:00.0000000

PM ENGINE

●	6.1 Perform engine valve set	N/A
●	6.2 Inspect air intake system hoses, pipes, clamps for signs of dirt ingress	PASS
●	6.3 Inspect engine for oil or fuel leaks	MONITOR
●	6.4 Inspect engine components for missing clamps	PASS

● 6.5 Inspect exhaust systemfor signs of leaks, loose bolts or missing clamps	PASS
● 6.6 Inspect turbo for security and signs of leaks	PASS
● 6.7 Inspect condition of exhaust lagging	PASS
● 6.8 Inspect engine mounts for condition and loose hardware	PASS
● 6.9 Inspect alternator mount condition and adjustment	PASS
● 6.10 Inspect wiring condition and security	PASS
● 6.11 Inspect engine belts	PASS

PM ENGINE COOLINGSYSTEM

● 7.1 Check coolant level	PASS
● 7.2 Check condition of radiator cap	PASS
● 7.3 Check condition of radiator core	PASS
● 7.4 Check cooling systemfor signs of leaks	PASS
● 7.5 Check hose and clamp condition	PASS
● 7.6 Inspect fan condition and operation	PASS
● 7.7 Inspect radiator and fan guard condition	PASS

PM SWINGTRANSMISSION

● 8.1 Inspect swing transmission for signs of leaks	PASS
● 8.2 Inspect swing transmission oil level	PASS

PM HYDRAULIC SYSTEM

● 9.1 Check hydraulic oil level	PASS
● 9.2 Inspect hydraulic cylinders for leaks and security	PASS
● 9.3 Inspect hydraulic hoses for leaks, damage, security	PASS
● 9.4 Inspect hydraulic pump condition, leaks, security	PASS

- | | | |
|---|------------------------------------------------------------------------------------------------------------------------------|-------------|
| ● | 9.5 Check Pilot Accumulator operation as per OEM Maintenance Procedure - Test Boom Down Functionality with engine off | <i>PASS</i> |
|---|------------------------------------------------------------------------------------------------------------------------------|-------------|

PM FINAL DRIVES

- | | | |
|---|----------------------------------------------------------------------------|-------------|
| ● | 10.1 Inspect LHS final drive mount condition for leaks and security | <i>PASS</i> |
| ● | 10.2 Inspect LHS oil level and mag plug condition | <i>PASS</i> |
| ● | 10.3 Inspect RHS final drive mount condition for leaks and security | <i>PASS</i> |
| ● | 10.4 Inspect RHS oil level and mag plug condition | <i>PASS</i> |

PM UNDERCARRIAGE

- | | | |
|---|----------------------------------------------------------------------|-------------|
| ● | 11.1 Inspect LHS track tension | <i>PASS</i> |
| ● | 11.2 Inspect RHS track tension | <i>PASS</i> |
| ● | 11.3 Inspect tracks for loose/missing bolts | <i>PASS</i> |
| ● | 11.4 Inspect load and carrier rollers for signs of leaks | <i>PASS</i> |
| ● | 11.5 Inspect idlers for signs of leaks | <i>PASS</i> |
| ● | 11.6 Inspect sprocket segments condition | <i>PASS</i> |
| ● | 11.7 Inspect track frame for cracks, lose or missing hardware | <i>PASS</i> |

PM FRAME AND BODY

- | | | |
|---|--------------------------------------------------------------------------------------------------------------|-------------|
| ● | 12.1 Check panels for damage and security | <i>PASS</i> |
| ● | 12.2 Check access steps and walkway condition | <i>PASS</i> |
| ● | 12.3 Inspect boom condition – cracks, missing clamps, damaged pipes, excessive movement, lubrication | <i>PASS</i> |
| ● | 12.4 Inspect stick condition – cracks, missing clamps, damaged pipes, excessive movement, lubrication | <i>PASS</i> |
| ● | 12.5 Inspect quick hitch condition and operation | <i>PASS</i> |
| ● | 12.6 Inspect bucket condition – cracks, wear, damage, mounts | <i>PASS</i> |
| ● | 12.7 Inspect GET condition and hardware | <i>PASS</i> |

PM ELECTRICAL SYSTEM

●	13.1 Check battery condition	PASS
●	13.2 Check battery terminal condition	PASS
●	13.3 Check battery security	PASS
●	13.4 Check battery box drain is clear	PASS
●	13.5 Check wiring condition and security	PASS

PM GREASE SYSTEM

●	14.1 Check all points for acceptable lubrication	PASS
●	14.2 Inspect grease system operation	PASS
●	14.3 Check grease line condition	PASS
●	14.4 Refill grease tank	N/A
●	14.5 Lubricate bucket linkage	PASS
●	14.6 Lubricate blade linkage	PASS
●	14.7 Lubricate boom & stick linkage	PASS
●	14.8 Lubricate swing bearing	PASS

PM OPERATOR STATION

●	15.1 Check all doors for correct opening and closing adjustments and operation	PASS
●	15.2 Inspect condition of door seals	PASS
●	15.3 Check window glass and seal condition	MONITOR
●	15.4 Check mirror condition and adjustments	PASS
●	15.5 Fill window washer reservoir	N/A
●	15.6 Inspect air con vents condition	PASS
●	15.7 Inspect seat belt and mounting hardware	PASS

15.8 Inspect seat condition, operation and mounting	PASS
-----------------------------------------------------	------

15.9 Replace cabin A/C filter	N/A
-------------------------------	-----

OIL SAMPLING

16.1 Engine	NORMAL
-------------	--------

PM POST SERVICE INSPECTION CHECKS

17.1 All inspections have been completed and rectified as required	NORMAL
--------------------------------------------------------------------	--------

17.2 All safety related defects have been repaired or reported	NORMAL
----------------------------------------------------------------	--------

17.3 All defects have been noted and reported	NORMAL
-----------------------------------------------	--------

17.4 All fluids are at correct level and drain plugs tight	NORMAL
------------------------------------------------------------	--------

17.5 All oil samples have visually been inspected and any notable signs of contamination have been reported	NORMAL
-------------------------------------------------------------------------------------------------------------	--------

17.6 All replaced filters have been cut and inspected and photos added to CAT Inspect and reported to supervisor	NORMAL
------------------------------------------------------------------------------------------------------------------	--------

17.7 Machine has been recommissioned and ready for operation	NORMAL
--------------------------------------------------------------	--------

17.8 PM service notification marked off in Vision Link	NORMAL
--------------------------------------------------------	--------

DEFECTS IDENTIFIED

18.1 DEFECTS IDENTIFIED	cracked front windscreen (customer charge on return from hire). minor engine oil leak from filler cap (new o-ring required next service)
-------------------------	------------------------------------------------------------------------------------------------------------------------------------------

OIL USED

19.1 Hydraulic oil	0
--------------------	---

19.2 Engine oil	0
-----------------	---

19.3 Slew oil	0
---------------	---



Australian Hammer Supplies Hire
Unit 3/32 Williamson Road
Ingleburn
NSW 2565

● 19.4 Gear oil 0

● 19.5 Coolant 0

● Site photo

● Site photo

● Site photo

● Site photo

● Site photo

● Site photo